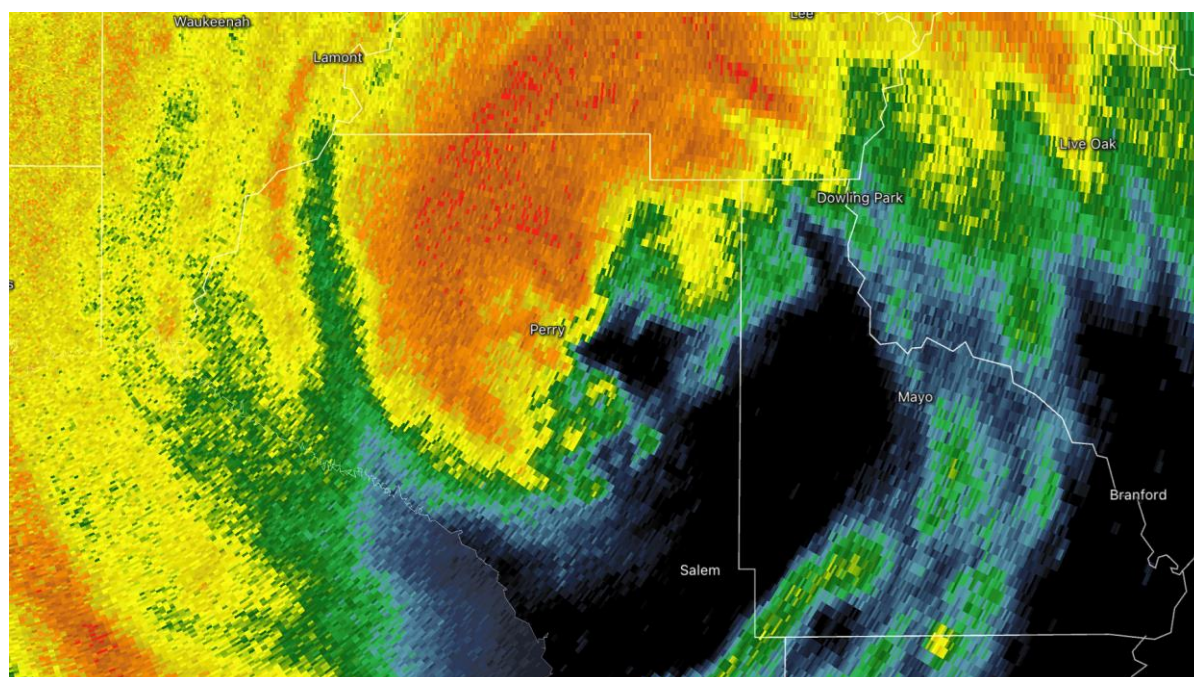


iCYCLONE CHASE REPORT

storm	Hurricane IDALIA		
location	Perry, Florida, USA		
date	30 August 2023		
chasers	Josh Morgerman, Erik Fox, Parker Sigg	author	Josh Morgerman

Hurricane IDALIA struck the Big Bend region of Florida on 30 August 2023. The author was in the impact zone to observe the cyclone’s passage and collect data. **Highlights:**

- The author penetrated the hurricane’s small, poorly-defined **eye** on Highway 98 just S of Perry—near **Athena**—at ~8:15 am EDT. From there, he drove back up to **Perry** and into the cyclone’s vigorous **NW eyewall** by ~8:30 am.
- Before the storm, the author deployed a **device (Kestrel 4500)** in a hotel room in Perry, at **30.0887N 83.5713W**.
 - To get sea-level pressure, the author calibrated the device with a reference altitude of 72 ft, which is the assumed elevation at this location (42 ft) plus 30 ft to account for the device’s location on a countertop in a third-floor hotel room.
- Per NHC hourly center positions, the **hurricane’s center** passed very near this device location between **8 and 9 am EDT**.
- **Minimum sea-level pressure** recorded here was **954.7 mb at 8:17 am EDT (1217Z)**.
- The pressure trace shows a relatively smooth descent until a little after 8 am EDT, at which point there are **volatile pressure fluctuations**, possibly indicative of core mesovortices. Conditions in Perry during this time were erratic and rapidly changing, with bursts of destructive winds and heavy rain alternating with calmer moments. One especially vigorous burst occurred at 8:40 am, followed by rapid easing. (See video: <https://www.youtube.com/watch?v=-zKd6K4OYEE&t=866s>.) The device malfunctioned at 8:44 am, ending data collection.
- From on the ground, **the hurricane’s core seemed to lack structural coherence**—as if it were deconstructing.
- Wind damage across the impact zone was **moderate**.



RadarScope image from 8:41 am EDT, when conditions in Perry were especially volatile.

ICYCLONE CHASE REPORT

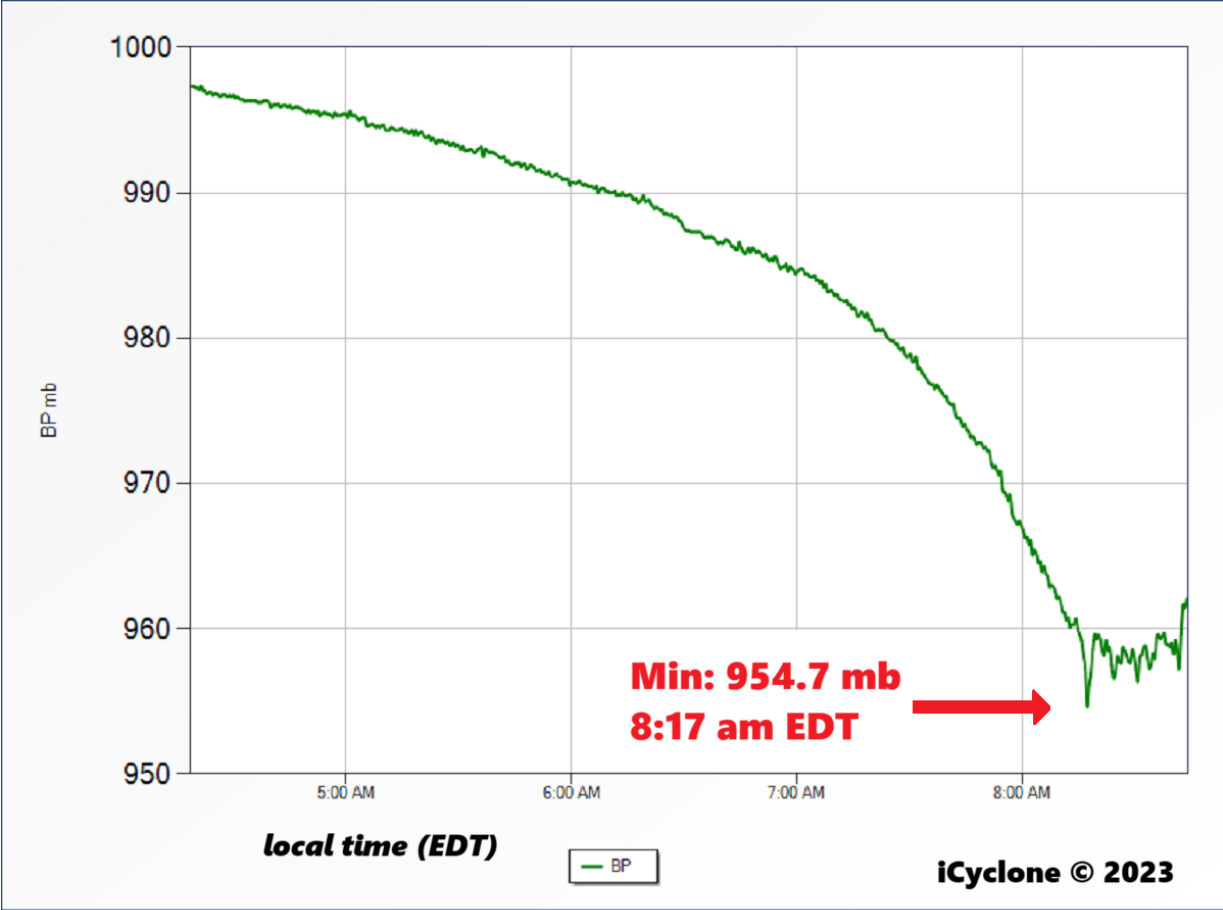
Chase Map



ICYCLONE CHASE REPORT

Barogram—Perry, Florida

The minimum sea-level pressure of 954.7 mb was recorded at 8:17 am EDT (1217Z) 30 Aug, as the hurricane's center passed very close to the observation point. Note the volatile pressure fluctuations between 8 and 9 am, possibly indicative of mesovortices. Conditions on the ground during this time were erratic and changeable, with destructive bursts of wind. Unfortunately, the device malfunctioned at 8:44 am, ending data collection.



HURRICANE IDALIA: 30 Aug 2023
Perry, Florida, USA
30.0887N 83.5713W – ref el 42 ft

ICYCLONE CHASE REPORT

Video

The passage of Hurricane IDALIA in and around Perry, Florida—as described in this report—is documented in a video on the author's YouTube channel: <https://www.youtube.com/watch?v=-zKd6K4OYEE>.

For easy analysis, all the footage is timestamped in local time (EDT).

Questions or Feedback?

Get in touch:

Josh Morgerman

josh.morgerman@symbblaze.com
info@icyclone.com